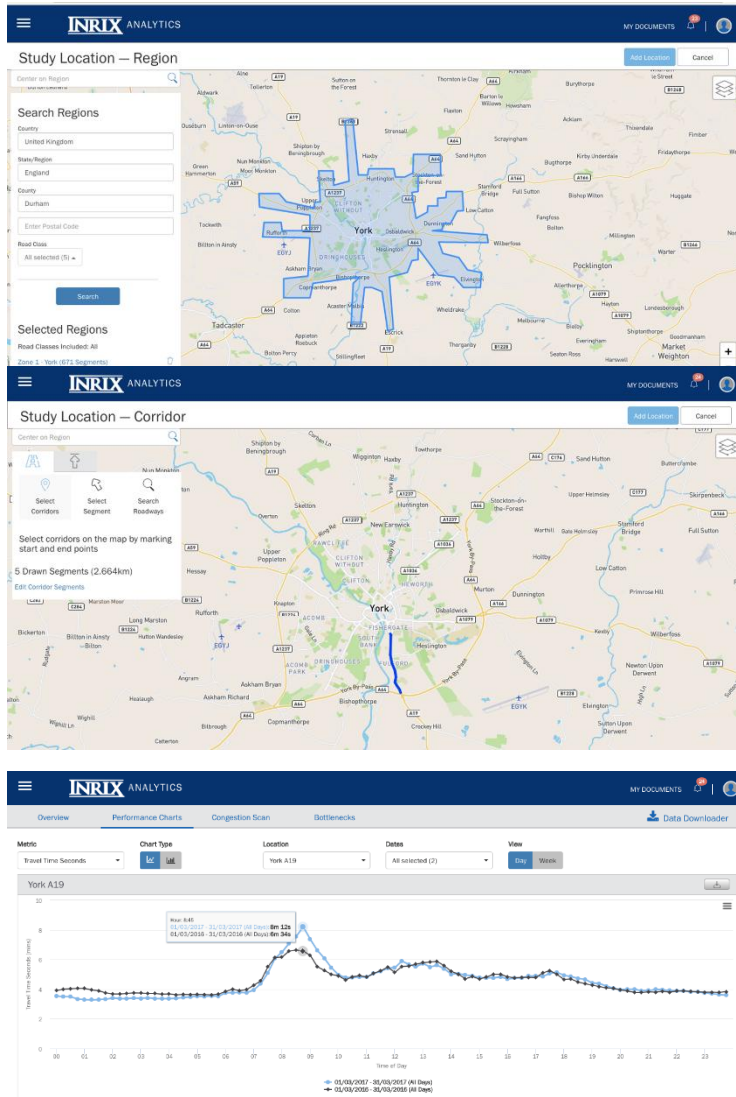


## Our approach to monitoring benefits

We will use access to INRIX's Roadway Analytic suite to use floating vehicle data to measure before and after journey time improvements due to our co-operative UTC and modelling work

We have already collected some “before” data as shown below.



We will use this data, allied to traffic count volumes and classifications from our CCTV and traffic counters to develop quantified savings in journey cost and also through modelling approaches emissions savings.