

York Central – Part 1

Wilton Rise Bridge

York Station West Entrance

Network Rail

- **Mathew Lewis**
- **Ian Parker**
- **Josh Chapman**

What is York Central?

One of the UK's largest and most exciting brownfield regeneration sites at 45 hectares



£132m

Government investment
secured by York-Central-Investment
key infrastructure



2,500 New Homes
on brownfield land



**Excellent public
transport connections**
at the heart of the UK rail network



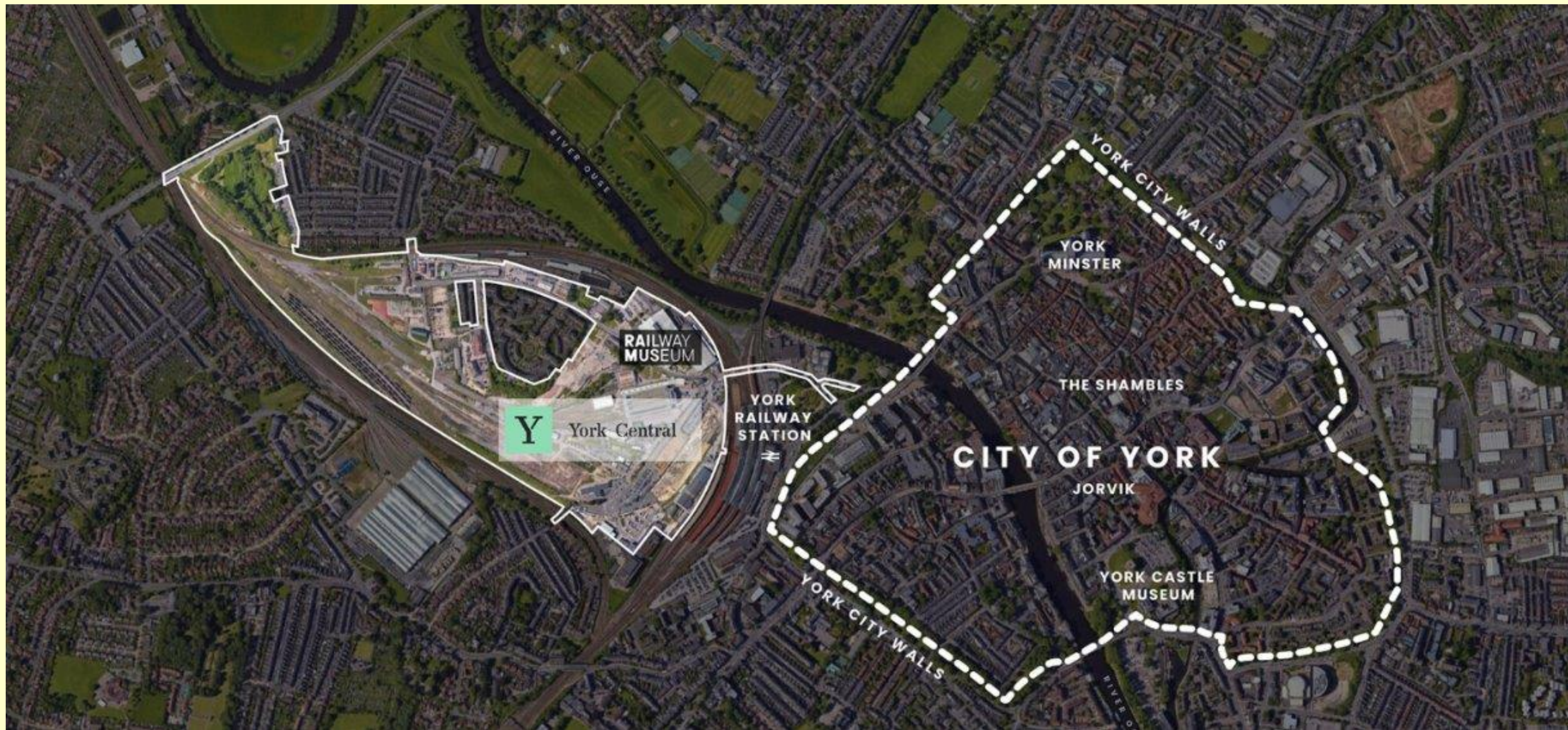
6,500+
High Value Jobs



Over
1 million sq ft
of quality offices, retail
and leisure space



£1.16bn
To the economy
(GVA)



03

05



A decorative graphic on the left side of the slide, consisting of a series of vertical blue bars of varying heights connected by horizontal lines, resembling a stylized rail track or fence.

Wilton Rise Footbridge

A decorative graphic on the right side of the slide, identical to the one on the left, consisting of a series of vertical blue bars of varying heights connected by horizontal lines, resembling a stylized rail track or fence.

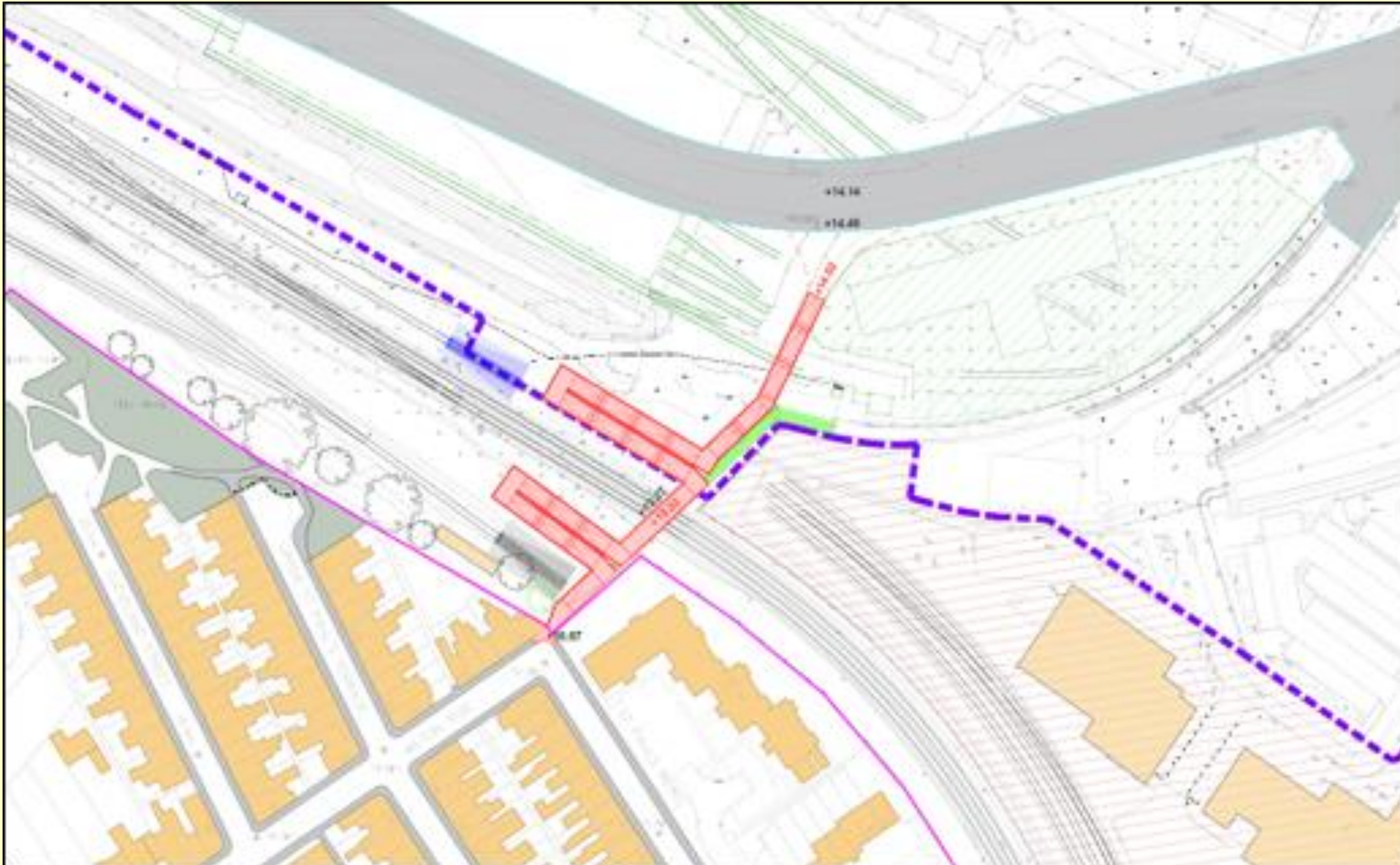
Shortlisted options ~ Option 1 – Standard Network Rail Bridge



Shortlisted options ~ Option 1 – Standard Network Rail Bridge

03

05



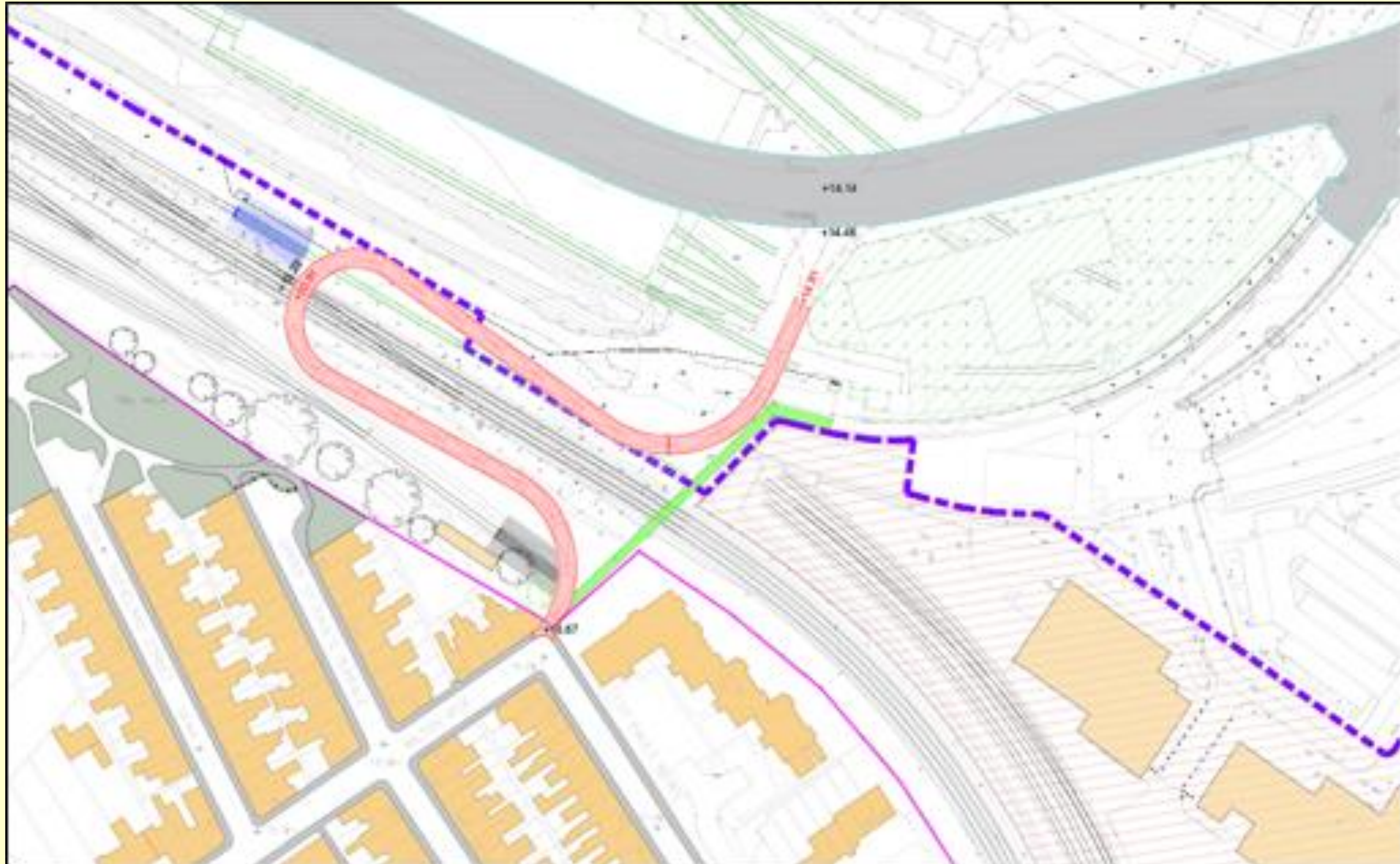
Option 2 – Meandering Curves from Wilton Rise



Option 2 – Meandering Curves from Wilton Rise

03

05



Option 3 – Upper St Paul's Terrace Link



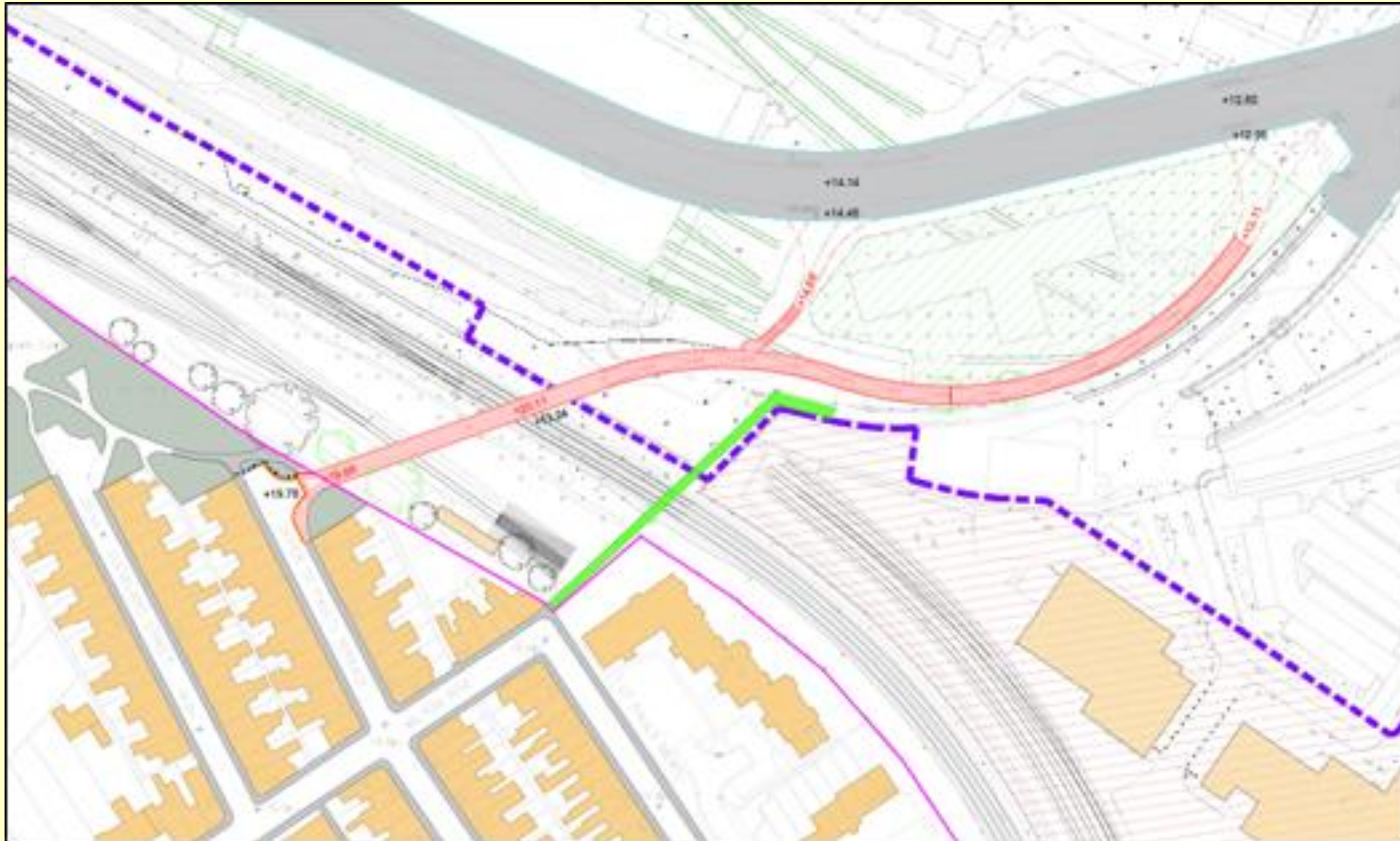
03

05

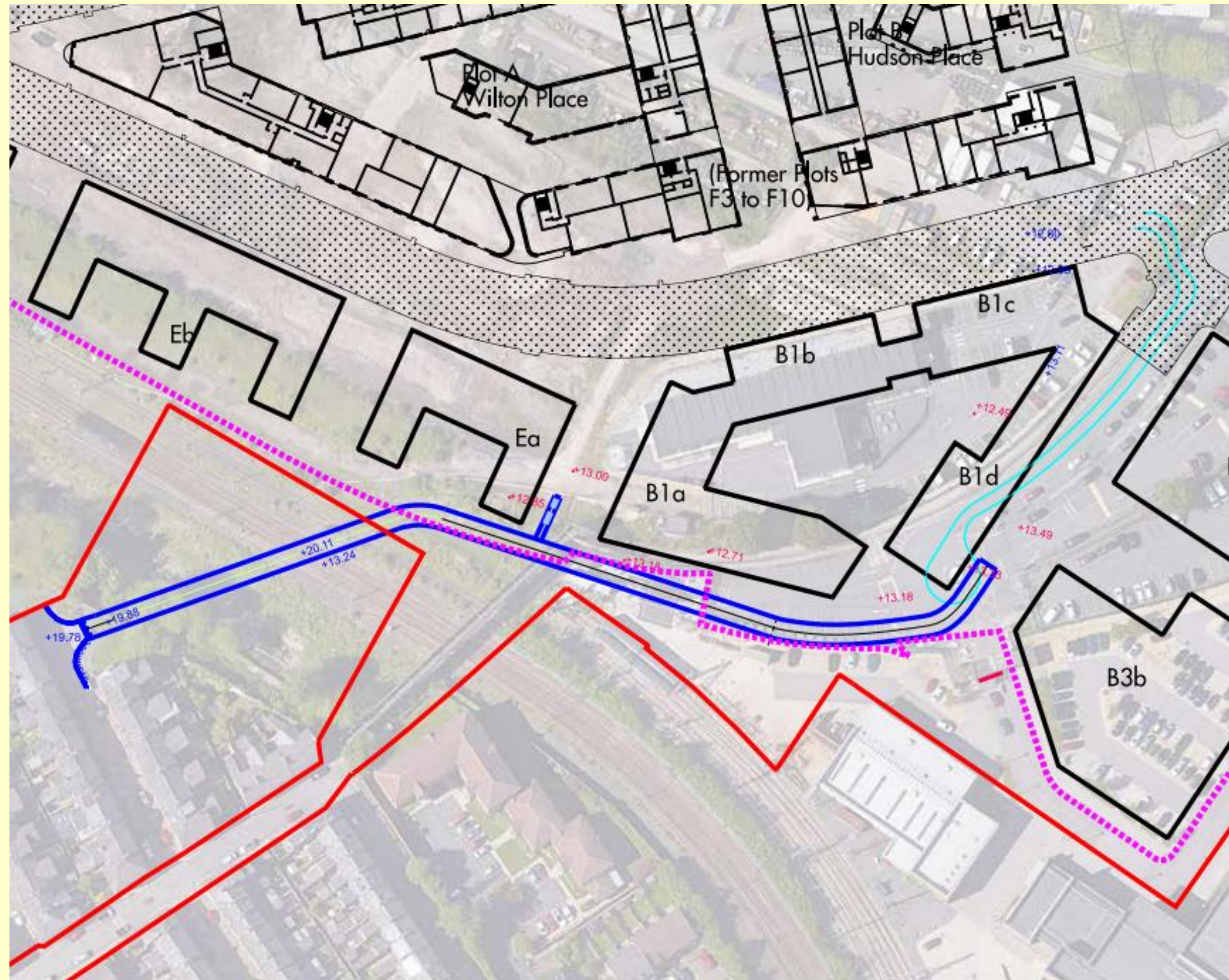
Option 3 – Upper St Paul's Terrace Link

03

05



Option 3 – Upper St Paul’s Terrace Link



03

05



Western Station Entrance

Location of lift down to Platforms 5, 6, &, 8 & 9



03

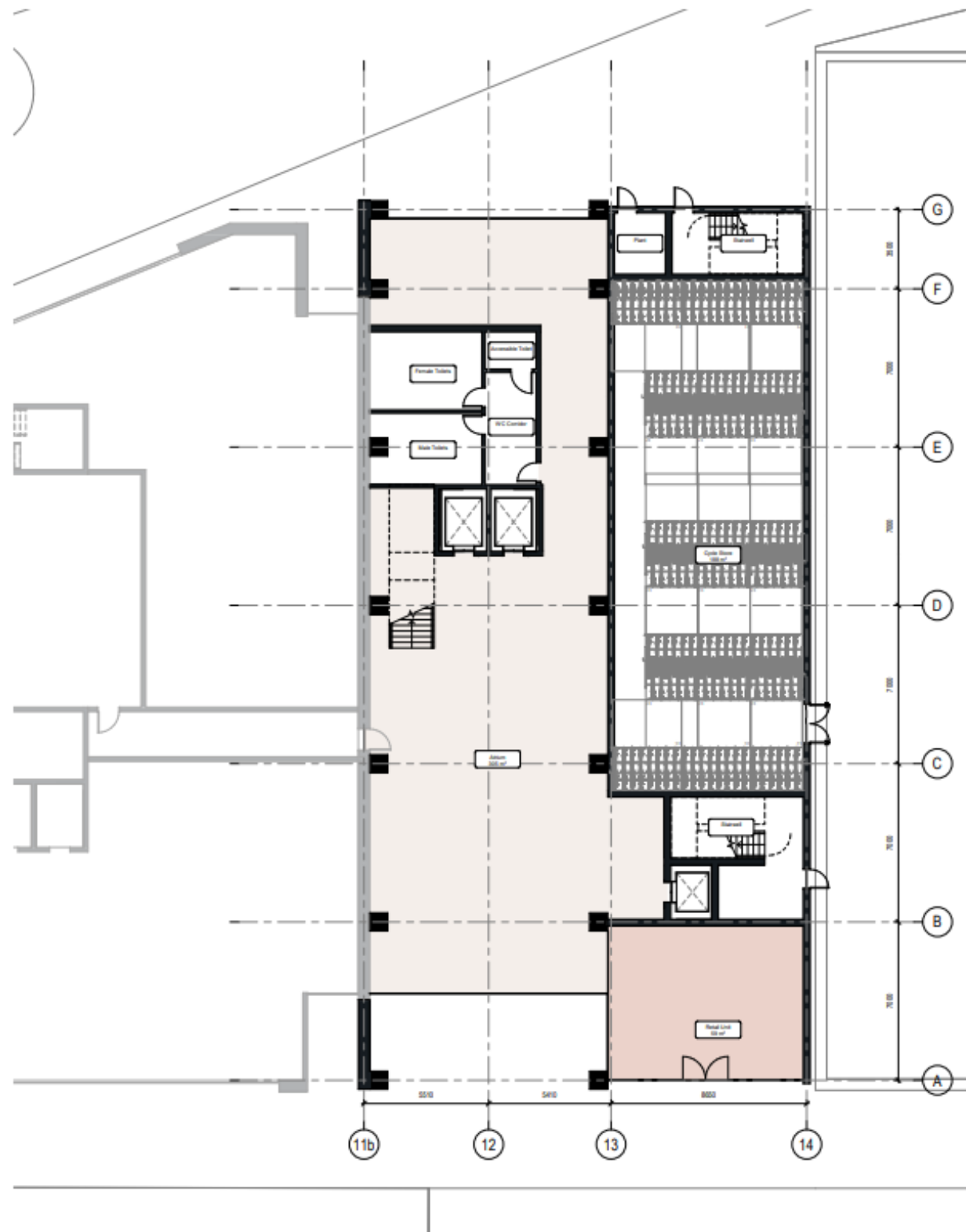
05

Proposed Station Building Layout

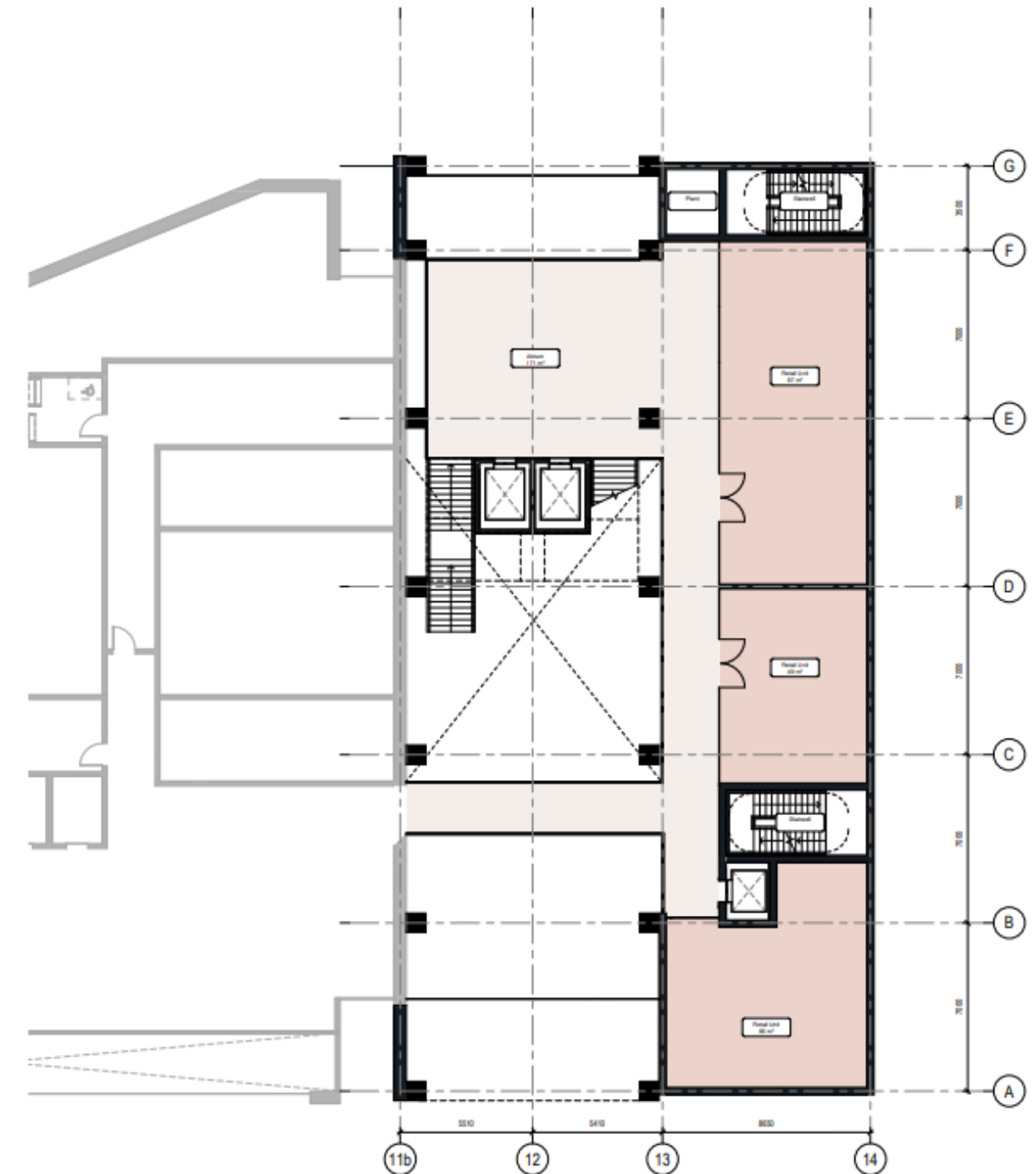


Proposed Station Building Layout

Proposed Lower Ground Floor Plan



Proposed Upper Ground Floor Plan

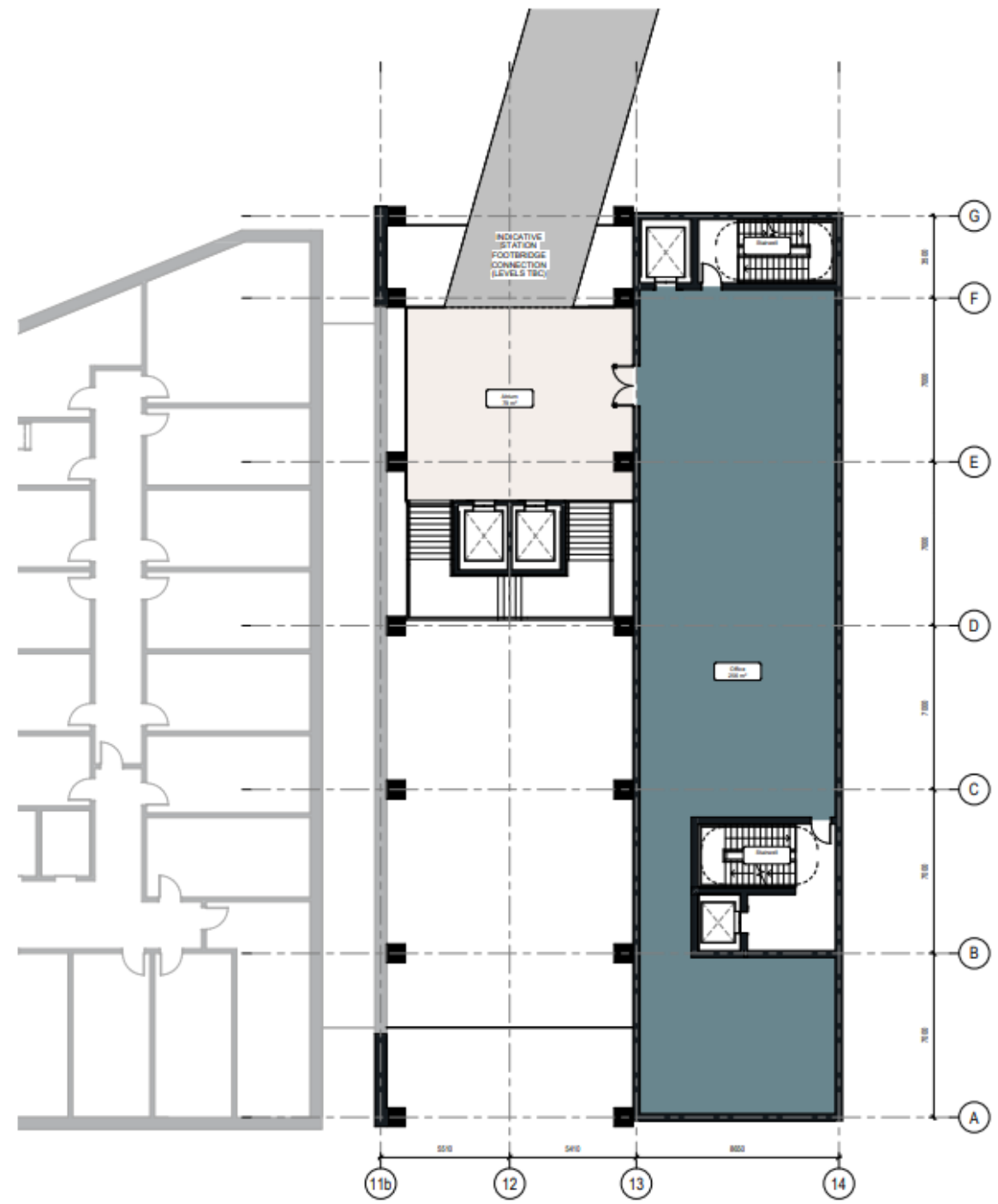


03

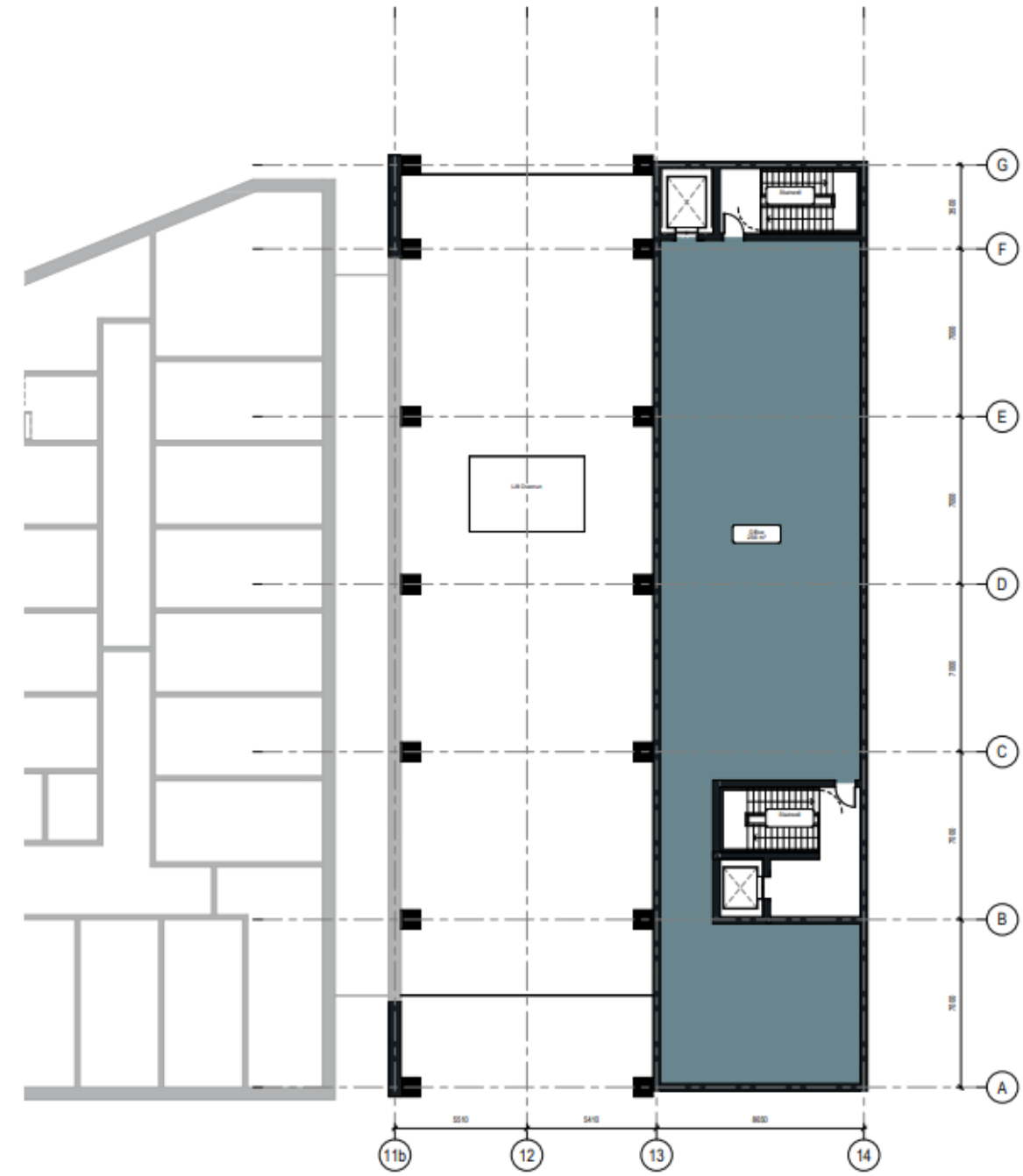
05

Proposed Station Building Layout

Proposed First Floor Plan



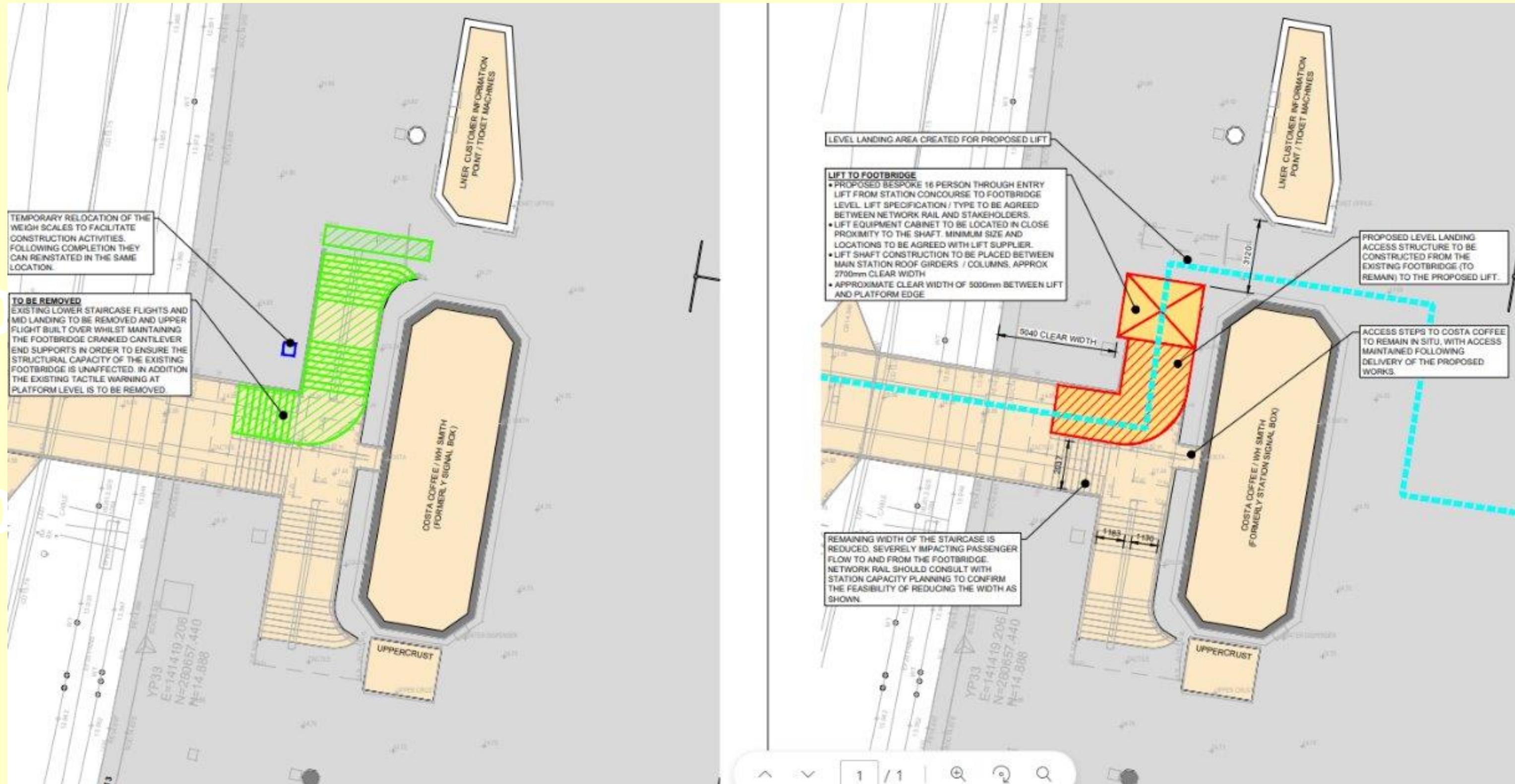
Proposed Second Floor Plan



03

05

Possible Option for Eastern FB Access



Possible Option for Eastern FB Access

