

NOTICE OF THE MAKING OF A DEFINITIVE MAP MODIFICATION ORDER

THE COUNCIL OF THE CITY OF YORK

WILDLIFE AND COUNTRYSIDE ACT 1981

NORTH RIDING OF YORKSHIRE
DEFINITIVE MAP AND STATEMENT

PUBLIC RESTRICTED BYWAY MURTON 14 and PUBLIC RESTRICTED BYWAY HOLTBY 8
MODIFICATION ORDER 2025

The above Order, made on 11 December 2024, if confirmed as made, will modify the definitive map and statement for the area by adding a public restricted byway between public bridleway Murton 7 and Bad Bargain Lane (GR SE 6572 5318 to 6500 5421).

A copy of the Order as made and the Order Map may be seen free of charge on our website www.york.gov.uk/PROWNotices until **29 August 2025**. Alternatively, you may write to the Rights of Way Officer at City of York Council, West Offices, Station Rise, York, YO1 6GA requesting a copy of the Order. There is no charge for this service.

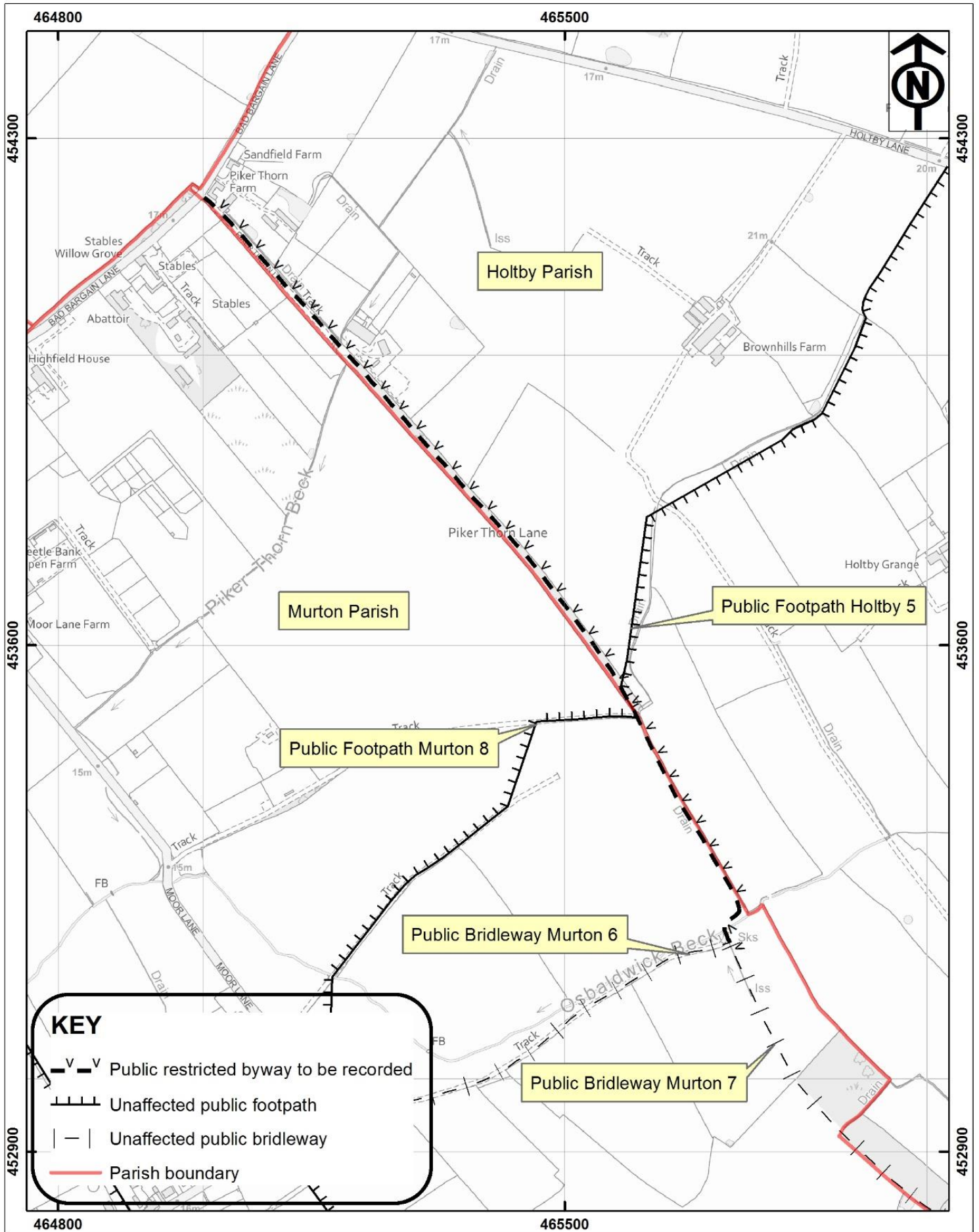
Any representation or objection relating to the Order must be sent in writing to “the Rights of Way Officer, City of York Council, West Offices, Station Rise, York, YO1 6GA”, or by emailing rightsofway@york.gov.uk and state the grounds on which it is made. It must reach the council no later than **29 August 2025**.

Please note that objections/representations cannot be treated as confidential and will come into the public domain. Copies of any objections or representations received will be disclosed to interested parties, including the Planning Inspectorate where the case is referred to it for determination.

If no representations or objections are duly made to the Order, or to any part of it, or if any so made are withdrawn, the Council of the City of York, instead of submitting the Order to the Secretary of State or part of it if the Authority has by Notice to the Secretary of State so elected under paragraph 5 of Schedule 15 to the Wildlife and Countryside Act 1981 may itself confirm the Order or that part of the Order. If the Order is submitted to the Secretary of State for the Environment, in whole or in part, any representations or objections which have been duly made and not withdrawn will be sent with it.

Dated: 17 July 2025

Bryn Roberts
Director of Governance
City of York Council
West Offices
Station Rise
York
YO1 6GA



West Offices, Station Rise, York,
YO1 6GA
Telephone: 01904 551550

Public Restricted Byway Murton 14 and Public Restricted Byway Holtby 8 Modification Order 2025

Scale 1:7,000

Drawn By: LRG

Date: 10/4/25

Public Rights of Way

Reference:

Drawing No.

Contains Ordnance Survey data © Crown copyright and database right 2025

THE COUNCIL OF THE CITY OF YORK

WILDLIFE AND COUNTRYSIDE ACT 1981

NORTH RIDING OF YORKSHIRE DEFINITIVE MAP AND STATEMENT

**PUBLIC RESTRICTED BYWAY MURTON 14 and PUBLIC RESTRICTED
BYWAY HOLTBY 8 MODIFICATION ORDER 2025**

Bryn Roberts
Director of Governance
City of York Council
West Offices
Station Rise
York
YO1 6GA

THE COUNCIL OF THE CITY OF YORK
WILDLIFE AND COUNTRYSIDE ACT 1981

NORTH RIDING OF YORKSHIRE
DEFINITIVE MAP AND STATEMENT

PUBLIC RESTRICTED BYWAY MURTON 14 and PUBLIC RESTRICTED BYWAY HOLTBY 8
MODIFICATION ORDER 2025

This Order is made by the Council of the City of York under Section 53(2)(b) of the Wildlife and Countryside Act 1981 ("the Act") because it appears to the authority that the North Riding of Yorkshire Definitive Map and Statement require modification in consequence of the occurrence of an event specified in Section 53(3)(c)(i). This is due to the discovery by the authority of evidence which (when considered with all other relevant evidence available to them) shows that a right of way which is not shown in the map and statement subsists or is reasonably alleged to subsist over land in the area to which the map relates, being a right of way such that the land over which the right subsists is a public path, a restricted byway or, subject to section 54A, a byway open to all traffic.

The authority has consulted with every local authority whose area includes the land to which the Order relates. The Council of the City of York hereby order that:

1. For the purpose of this Order the relevant date is 11 December 2024.
2. The North Riding of Yorkshire Definitive Map and Statement shall be modified as described in Part I and Part II of the Schedule and shown on the map attached to the Order.
3. This Order shall take effect on the date it is confirmed and may be cited as the Public Restricted Byway Murton 14 and Public Restricted Byway Holtby 8 Modification Order 2025.

THE COMMON SEAL of **THE COUNCIL OF THE CITY OF YORK** was hereunto affixed

this 17th day of April 2025

in the presence of:



An Authorised Officer



No. In Seal Register:

SCHEDULE
PART I

Modification of Definitive Map
Description of path or way to be added

<u>Section of public restricted byway as shown on the attached Map</u>	<u>Description</u>
Murton 14 indicated on the Order Map and marked as Points A-B- C-D-E	Commencing at its junction with public bridleway Murton 6 and public bridleway Murton 7 at grid reference (GR) SE 6572 5318 (POINT A) the 5.3 metre wide earth surfaced public restricted byway heads north west for approximately 16 metres to GR SE 6572 5320 (POINT B) where the 5.3 metre wide earth surfaced public restricted byway passes through a field gate then continues north west for approximately 7 metres to GR SE 6572 5321 (POINT C) where the 5.3 metre wide earth surfaced public restricted byway heads north east for approximately 33 metres to GR SE 6574 5323 (POINT D) where the 5.3 metre wide earth surfaced public restricted byway heads north west for approximately 309 metres to GR SE 6559 5350 (POINT E) at the Holtby Parish boundary and its junction with public footpath Murton 8 and public restricted byway Holtby 8.
Holtby 8 indicated on the Order Map and marked as Points E-F- G	Commencing at the Murton Parish boundary which is also its junction with public footpath Murton 8 and public restricted byway Murton 14 at grid reference (GR) SE 6559 5350 (POINT E) the 12.2 metre wide earth surfaced public restricted byway heads north west for approximately 40 metres to GR SE 6557 5354 (POINT F) its junction with public footpath Holtby 5 from where the 12.2 metre wide earth surfaced public restricted byway continues north west along Piker Thorn Lane for approximately 890 metres to GR SE 6500 5421 (POINT G) its junction with the maintainable highway known as Bad Bargain Lane.

PART II

Modification of Definitive Statement Variation of Particulars of path or way

Path No.	Grid Reference End Points	Description	Nature of Surface	Length (M)	Width (M)	Lawful Obstructions And Conditions
30/14	SE 6572 5318 to SE 6559 5350	Commencing at its junction with public bridleway Murton 6 and public bridleway Murton 7 at grid reference (GR) SE 6572 5318 the 5.3 metre wide earth surfaced public restricted byway heads north west for approximately 16 metres to GR SE 6572 5320 where the 5.3 metre wide earth surfaced public restricted byway passes through a field gate then continues north west for approximately 7 metres to GR SE 6572 5321 where the 5.3 metre wide earth surfaced public restricted byway heads north east for approximately 33 metres to GR SE 6574 5323 where the 5.3 metre wide earth surfaced public restricted byway heads north west for approximately 309 metres to GR SE 6559 5350 at the Holtby Parish boundary and its junction with public footpath Murton 8 and public restricted byway Holtby 8.	Earth (SE 6572 5318 to SE 6559 5350)	365m (SE 6572 5318 to SE 6559 5350) Total: 365m	5.3m (SE 6572 5318 to SE 6559 5350)	Field Gate (SE 6572 5320)
31/8	SE 6559 5350 to SE 6500 5421	Commencing at the Murton Parish boundary which is also its junction with public footpath Murton 8 and public restricted byway Murton 14 at grid reference (GR) SE 6559 5350 the 12.2 metre wide earth surfaced public restricted byway heads north west for approximately 40 metres to GR SE 6557 5354 its junction with public footpath Holtby 5 from where the 12.2 metre wide earth surfaced public restricted byway continues north west along Piker Thorn Lane for approximately 890 metres to GR SE 6500 5421 its junction with the maintainable highway known as Bad Bargain Lane.	Earth (SE 6559 5350 to SE 6500 5421)	930m (SE 6559 5350 to SE 6500 5421) Total: 930m	12.2m (SE 6559 5350 to SE 6500 5421)	None



KEY

- Public restricted byway to be recorded
- Unaffected public footpath
- Unaffected public bridleway
- Parish boundary

CITY OF YORK
COUNCIL

West Offices, Station Rise, York,
YO1 6GA
Telephone: 01904 551550

**Public Restricted Byway Murton 14 and
Public Restricted Byway Holtby 8 Modification 2025**

Scale 1:2,000	Drawn By: LRG	Date: 10/4/25
Public Rights of Way	Reference:	Drawing No.

Contains Ordnance Survey data © Crown copyright and database right 2025