

A photograph of a woman and a young child interacting with a white dog in a playroom. The dog is wearing a black collar and a bright yellow reflective vest. The woman is smiling and looking down at the dog. The child is sitting on the floor, smiling, and touching the dog's back. The background shows a playroom with various toys, including a wooden train set and a red toy car.

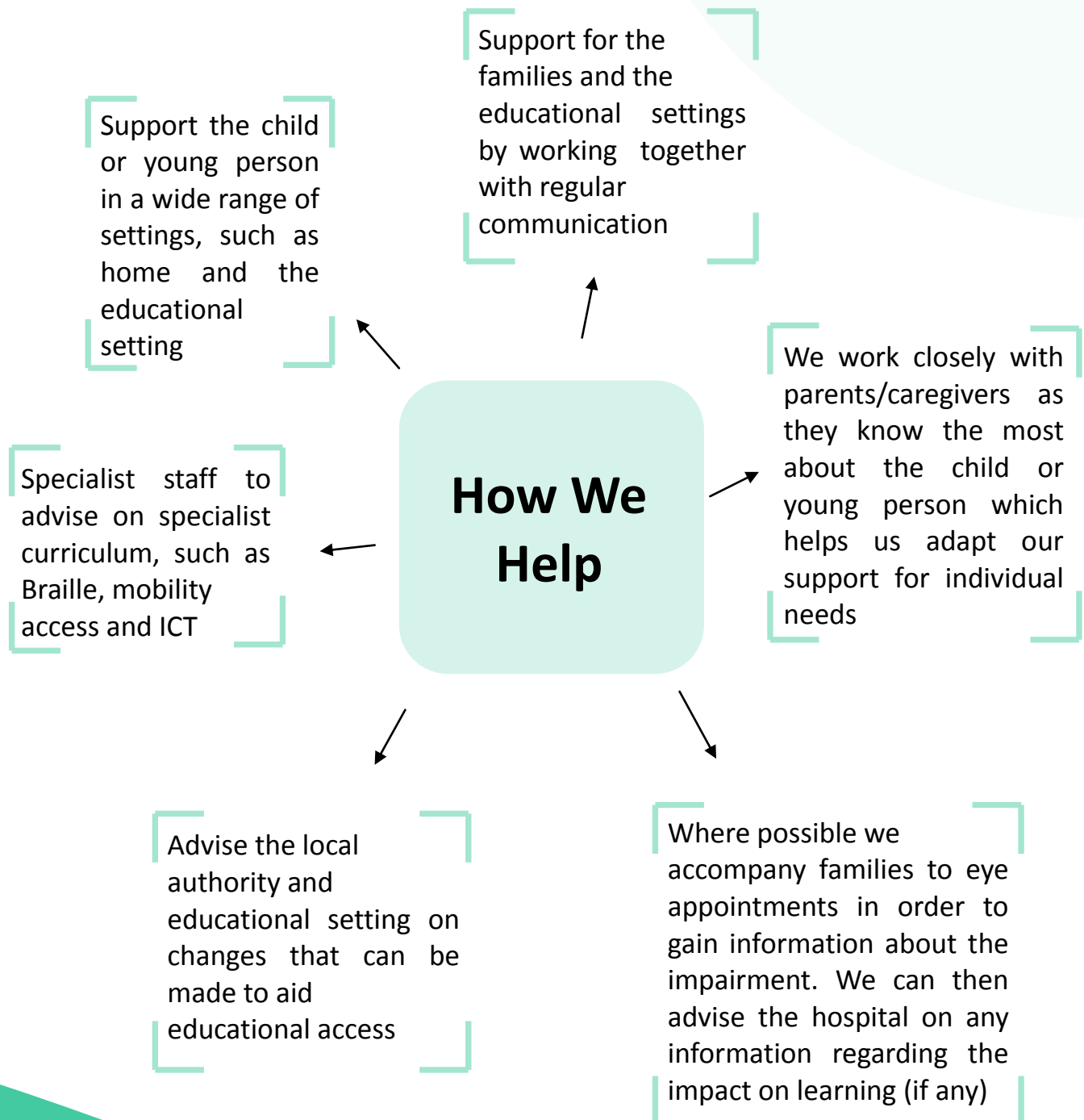
Specialist Teaching Team

Visual Impairment Support

Information leaflet about the support available for children and young people who have a visual impairment.

What We Do

Our visual support team provides specialist support to children and young people with reduced vision that cannot be corrected by wearing glasses.

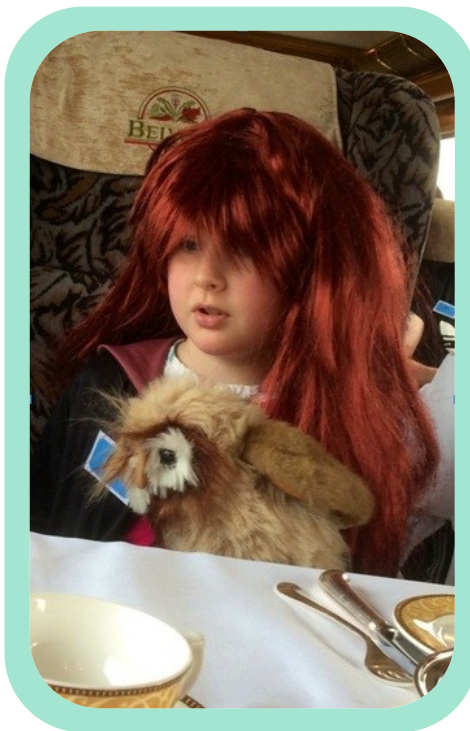


Levels of Support

The levels of support are dependent on the child or young persons needs. A priority system is used to determine support levels. This could be:

- . On request
- . Annual monitoring
- . Termly monitoring
- . Termly visits
- . Weekly visits
- . Multi-weekly visits

Our aim is to enable children and young people to take part as independently as possible in their school life.



Referrals

We accept referrals from:

- Parents
- Schools
- Early Year's Providers
- Health services
- Social Services

Referrals are always with parental consent.

Contact Us

Penny McDonald

Head of the Specialist Teaching Team

Penny.McDonald@york.gov.uk

01904 554204

Peter Bowles

Senior Practitioner

Peter.Bowles@york.gov.uk

01904 554320

Alison Prewer

Resource Technician


Alison.Prewer@york.gov.uk

01904 554327

A copy of our referral form can be obtained by ringing 01904 554256 or download by [clicking here](#)



Follow us on Twitter for the latest information in our service.

 @YorkSTTeam